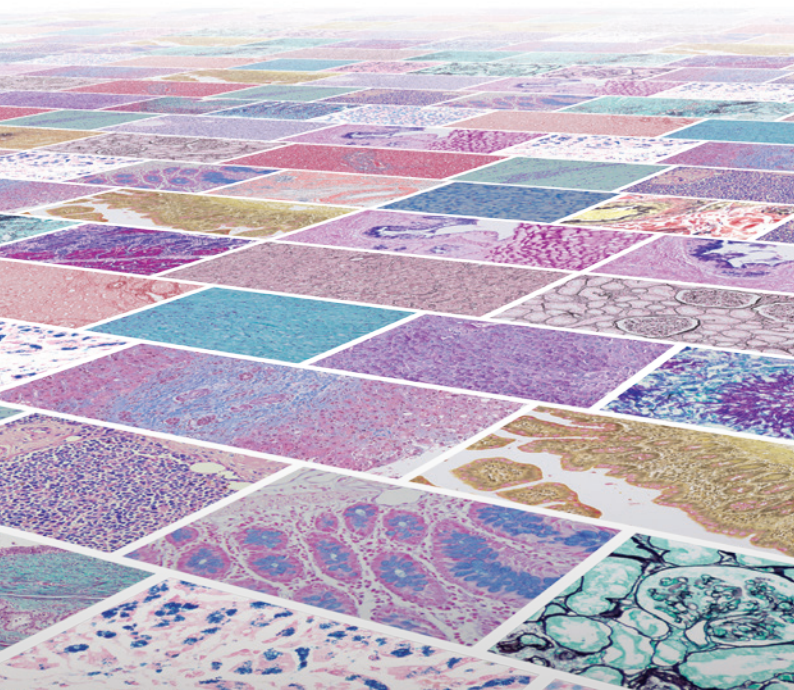


PRODUCT INFORMATION

Histostaining | Atlas of Special Stains



Intended use

Routinely processed samples (paraffin-embedded) may be used. The preferred fixative is neutral buffered formalin. The clinical interpretation of any staining, or its absence, should be complemented by morphological studies and proper controls, and should be evaluated within the context of the patient's clinical history and other diagnostic tests by a qualified pathologist. All reagents have been optimally prepared for use on Dako's Artisan Staining System and require no mixing or diluting.

Storage

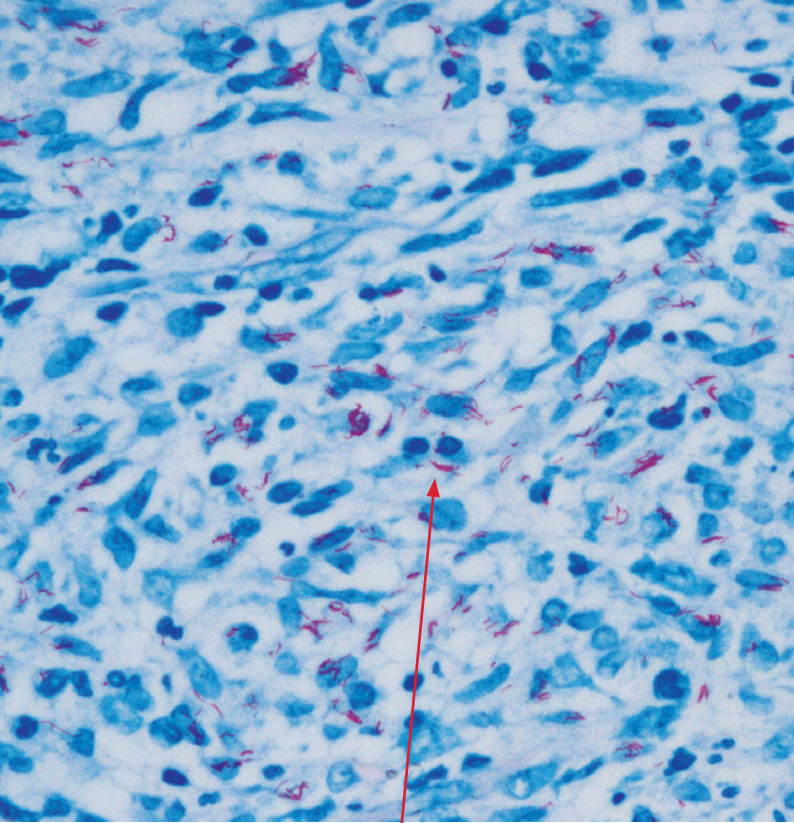
Each component should be stored at the temperature indicated on the label. Do not use after expiration date. If reagents are stored under any conditions other than those specified, the conditions must be verified by the user. There are no obvious signs to indicate instability of this product. Therefore, appropriate tissue must be run as controls for such verification. If unexpected staining is observed which cannot be explained by variations in laboratory procedures or improper storage, contact Dako Technical Support.

Time per Slide

*Actual Time per Slide varies depending on a number of factors, including but not limited to: placement on carousel, quantity of slides on instrument, staining combination and staining protocol. Using onboard drying and deparaffinization will add additional time to the throughput.

Index

AR162	Acid-Fast Bacteria (AFB)	4
AR362	Acid-Fast Bacteria (AFB) Light Green	6
AR169	Alcian Blue/PAS	8
AR169+AR171	Alcian Blue/PAS with Alpha-Amylase	10
AR178	Alcian Blue/PAS/Hematoxylin	12
AR160	Alcian Blue pH 2.5	14
AR307	Colloidal Iron	16
AR161	Congo Red	18
AR163	Elastic	20
AR174	Feulgen	22
AR164	Giemsa	24
AR167	Gomori's Blue Trichrome	26
AR166	Gomori's Green Trichrome	28
AR175	Gram	30
AR306	Gram Yellow	32
AR176	Grocott's Methenamine Silver (GMS)	34
AR376	Grocott's Methenamine Silver (GMS) Eosin	36
AR158	Iron	38
AR308	Jenner-Wright Giemsa	40
AR180	Jones' Basement Membrane (PAS-M)	42
AR480	Jones' Basement Membrane (PAS-M) H&E	44
AR380	Jones' Basement Membrane (PAS-M) Light Green	46
AR173	Masson's Trichrome	48
AR168	Mucicarmine	50
AR313	Orcein	52
AR165	Periodic Acid-Schiff (PAS)	54
AR165+AR171	Periodic Acid-Schiff (PAS) with Alpha-Amylase	56
AR172	Periodic Acid-Schiff (PAS) Green	58
AR182	Reticulin/No Counterstain	60
AR179	Reticulin/Nuclear Fast Red	62
AR181	Warthin-Starry	64

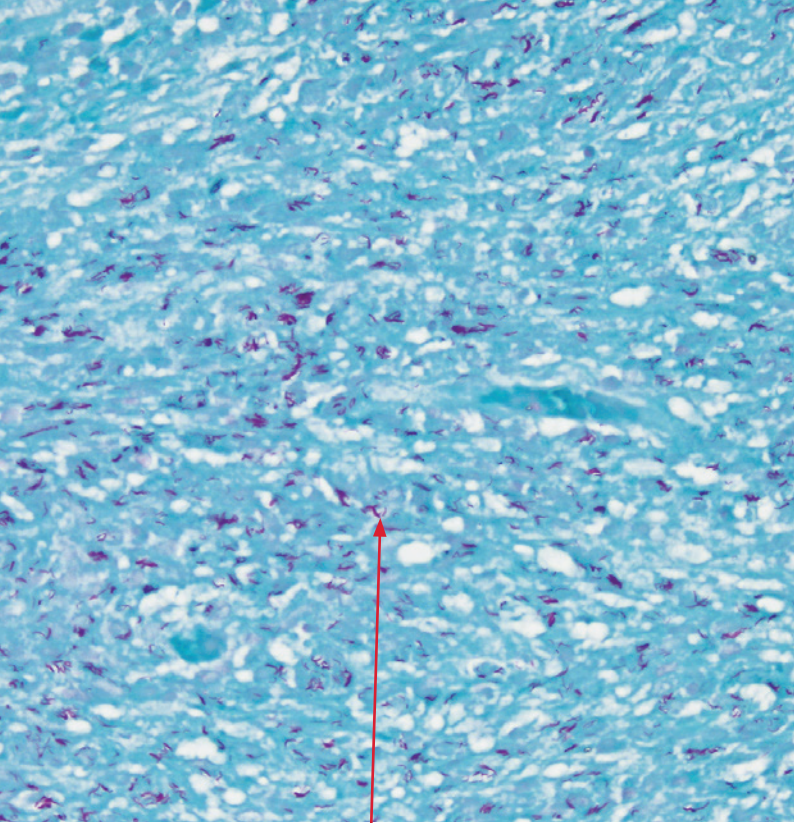


Acid-Fast Bacteria:
Varying shades of red

Acid-Fast Bacteria (AFB)

Intended for laboratory use to identify, by light microscopy, acid-fast bacteria, such as Mycobacterium, in tissue samples.

Product Code:	AR162
Staining Interpretation:	■ Acid-fast bacteria: Varying shades of red ■ Background: Light blue
Cut Thickness:	4 µm
Control Tissue:	Tissue infected with acid-fast bacteria
Time per Slide*:	0:12:43



Acid-Fast Bacteria:
Red

Acid-Fast Bacteria (AFB) Light Green

Intended for laboratory use to identify, by light microscopy, acid-fast bacteria, such as Mycobacterium, in tissue samples.

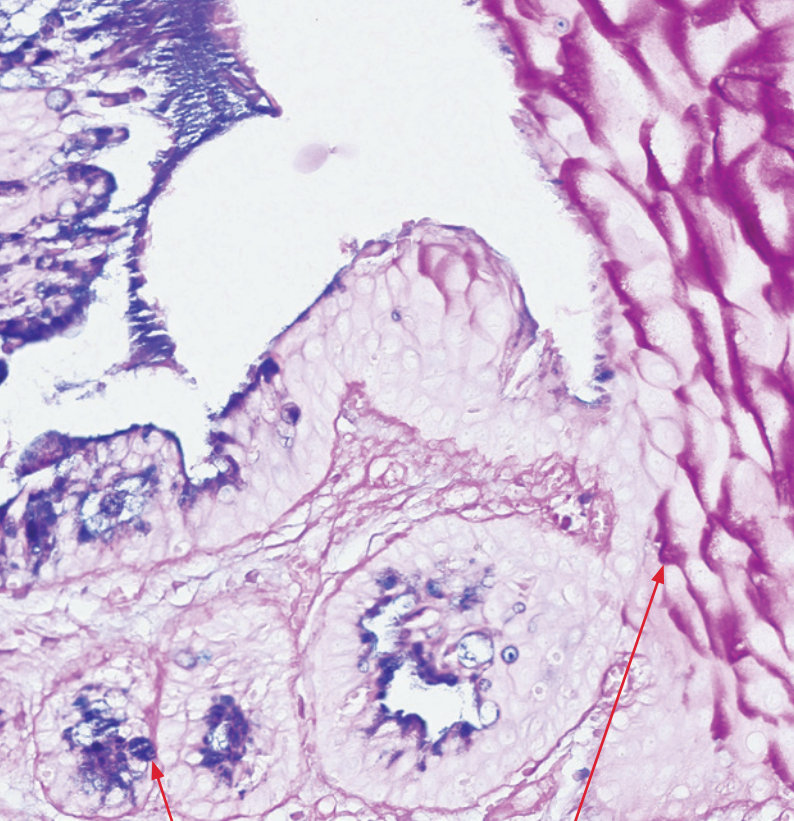
Product Code: AR362

Staining Interpretation: ■ Acid-fast bacteria: Varying shades of red
■ Background: Light green

Cut Thickness: 4 µm

Control Tissue: Tissue infected with acid-fast bacteria

Time per Slide*: 0:12:43



Acidic Mucins:
Blue

Glycogen

Alcian Blue/PAS

Intended for laboratory use to identify, by light microscopy, acidic and neutral mucins in tissue samples.

Product Code:

AR169

Staining Interpretation:

- Neutral mucins: Magenta
- Acidic mucins: Blue
- Mixtures of acidic and neutral mucins: Color depends on the dominant entity and will range from blue-purple or purple through violet or mauve

Cut Thickness:

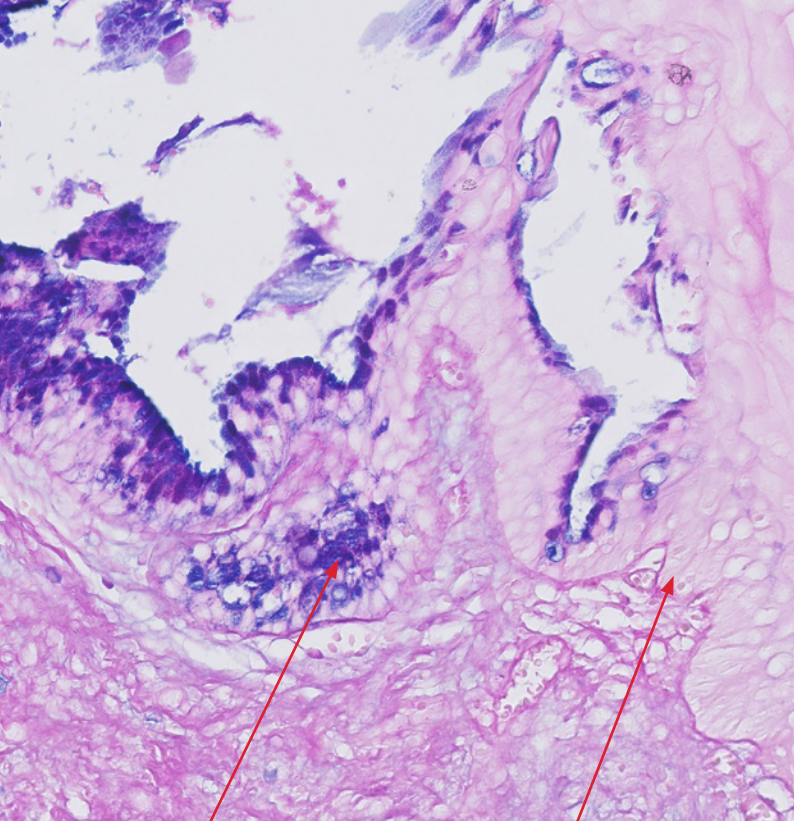
4 μ m

Control Tissue:

- Neutral Mucin: Stomach, prostate
- Acidic Mucin: Skin, umbilical cord
- Weakly sulfated epithelial mucin: Large intestine

Time per Slide*:

0:22:18



Acidic Mucins:
Blue

Digested Glycogen

Alcian Blue/PAS with Alpha-Amylase

Intended for laboratory use to identify, by light microscopy, acidic and neutral mucins in tissue samples. Alpha-Amylase digestion removes any glycogen in the tissue

Product Code:

AR169 (with AR171)

Staining Interpretation:

- Neutral mucins: Magenta
- Acidic mucins: Blue
- Mixtures of acidic and neutral mucins:
Color depends on the dominant entity and
will range from blue-purple to violet-mauve

Cut Thickness:

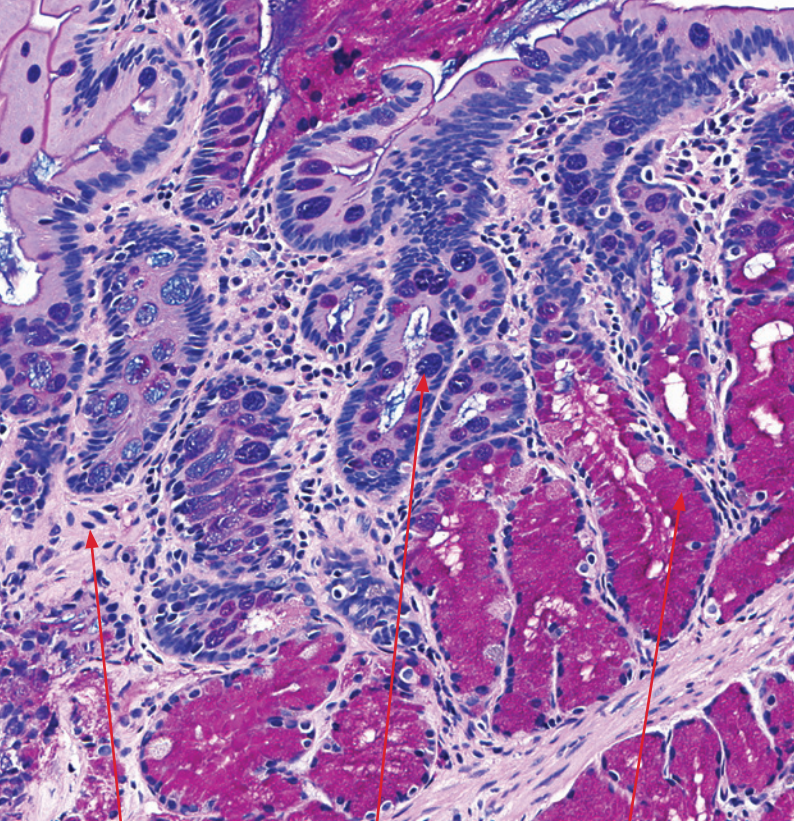
4 µm

Control Tissue:

Stomach, colon or umbilical cord

Time per Slide*:

0:37:45



Nucleus:
Black to blue

Acidic Mucins:
Blue

Neutral Mucins:
Magenta

Alcian Blue/PAS/Hematoxylin

Intended for laboratory use to identify, by light microscopy, acidic and neutral mucins in tissue samples.

Product Code: AR178

Staining Interpretation:

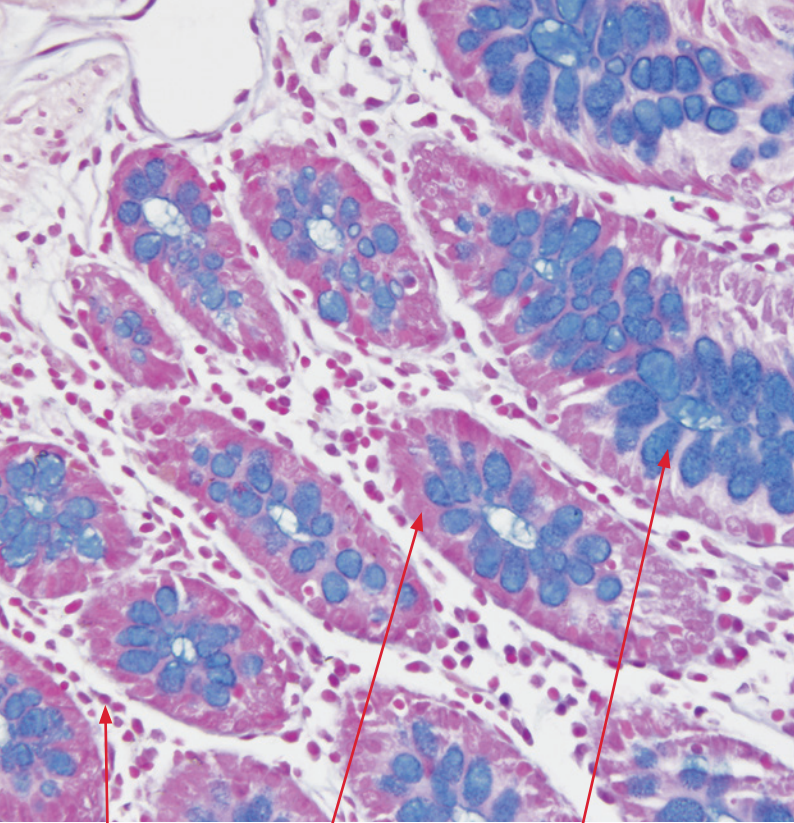
- Neutral mucins: Magenta
- Acidic mucins: Blue
- Mixtures of acidic and neutral mucins:
Color depends on the dominant entity and will range from green or purple through violet or mauve
- Nucleus: Black to blue

Cut Thickness: 4 µm

Control Tissue:

- Neutral Mucin: Stomach, prostate
- Acidic Mucin: Skin, umbilical cord
- Weakly sulfated epithelial mucin: Large intestine

Time per Slide*: 0:36:29



Nuclei:
Red to pink

Cytoplasm:
Pale pink

Goblet Cells:
Dark blue. Weakly sulfated acidic
mucopolysaccharides, sulfomucins,
hyaluronic acid, sialomucins.

Alcian Blue pH 2.5

Intended for laboratory use to identify, by light microscopy, acidic and neutral mucins in tissue samples.

Product Code:

AR160

Staining Interpretation:

- Weakly sulfated acidic mucopolysaccharides, sulfomucins, hyaluronic acid, sialomucins: Dark blue
- Nuclei: Red to pink
- Cytoplasm: Pale pink

Cut Thickness:

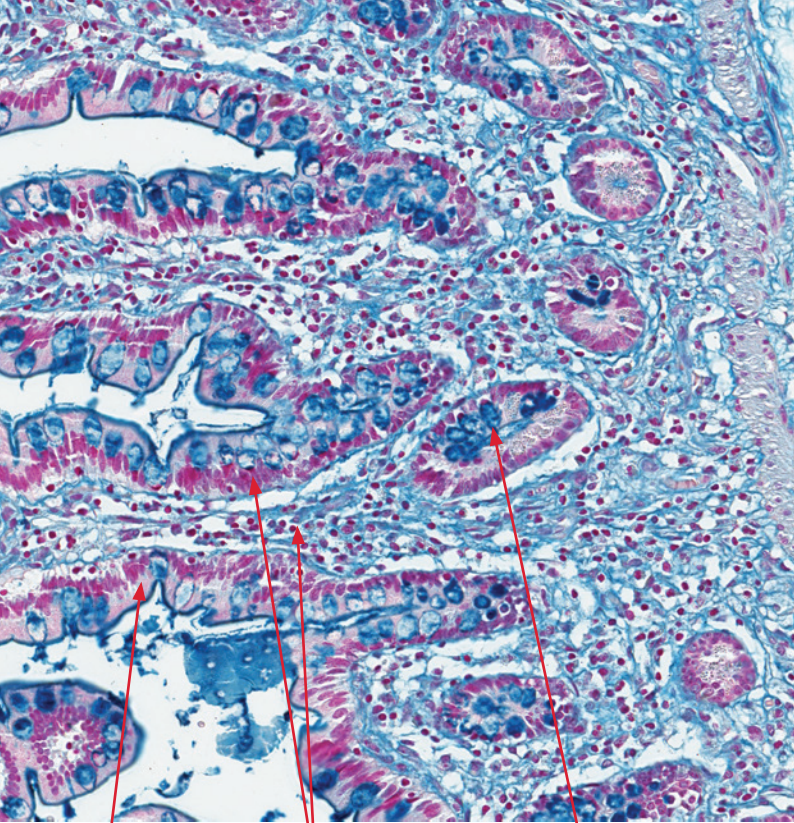
4 μ m

Control Tissue:

Small intestine, umbilical cord or colon

Time per Slide*:

0:26:03



Cytoplasm:
Light Pink

Nuclei:
Light Pink

**Carboxylated and Sulfated
Mucopolysaccharides and
Glycoprotein Mucin:**
Dark Blue

Colloidal Iron

Intended for laboratory use to identify, by light microscopy, carboxylated and sulfated mucopolysaccharides and glycoprotein mucin in tissue samples.

Product Code:

AR307

Staining Interpretation:

- Carboxylated and sulfated mucopolysaccharides and glycoprotein mucin: Dark blue
- Nuclei: Light pink
- Cytoplasm: Light pink

Cut Thickness:

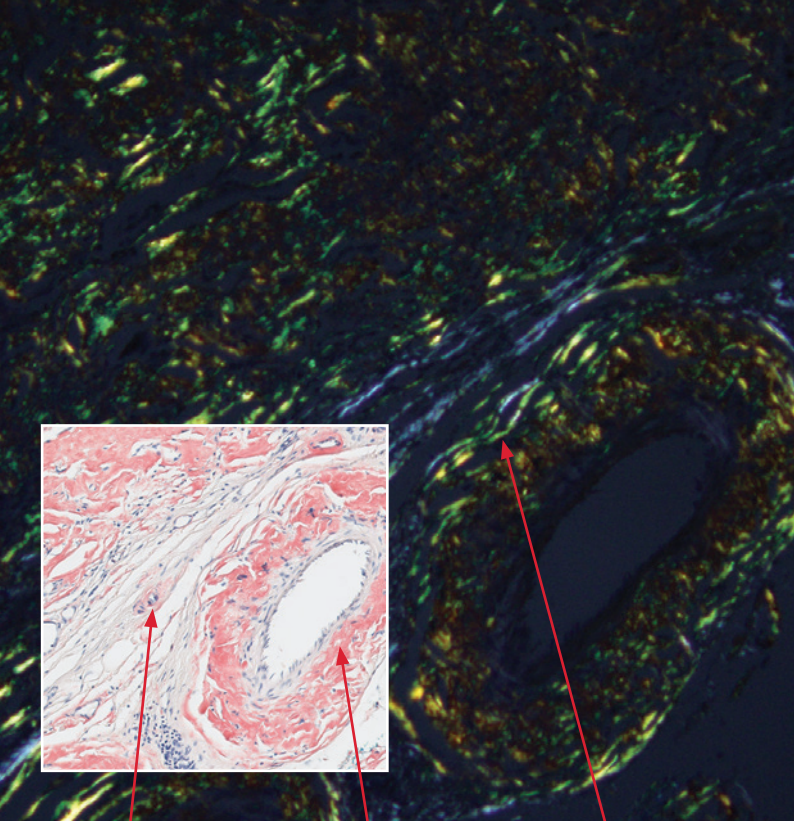
4 µm

Control Tissue:

Small intestine

Time per Slide*:

0:40:16



Nuclei:
Blue

**Amyloid, collagen, other
fibrous materials:**
Pale Pink/ Salmon

Amyloid:
Apple Green

Congo Red

Intended for laboratory use to identify, by **polarized** light microscopy, amyloid in tissue samples.

Product Code:

AR161

Staining Interpretation:

Polarized Light Microscopy

■ Amyloid: Apple green

Light Microscopy

■ Amyloid, collagen, other fibrous materials: Pale pink/salmon

■ Nuclei: Blue

Cut Thickness:

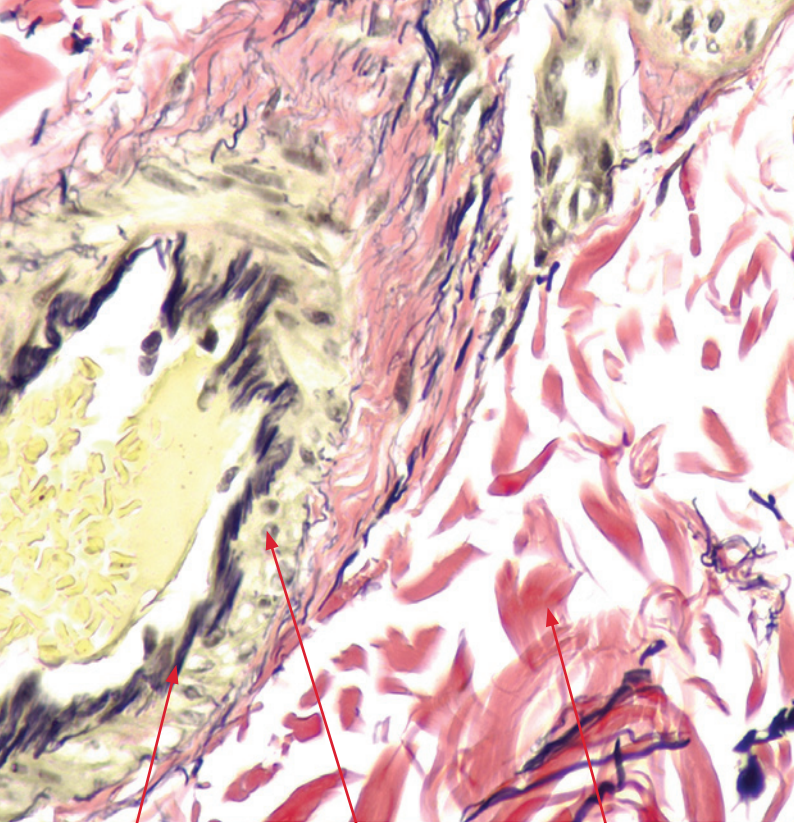
8 μ m

Control Tissue:

Tissue with amyloid or heart tissue

Time per Slide*:

0:31:16



Elastic Fibers:
Black

Nuclei:
Blue to black

Collagen:
Red

Elastic

Intended for laboratory use to identify, by light microscopy, elastic fibers in tissue samples.

Product Code:

AR163

Staining Interpretation:

- Elastin fibers: Black
- Nuclei: Blue to black
- Collagen: Red
- Other tissue elements: Yellow

Cut Thickness:

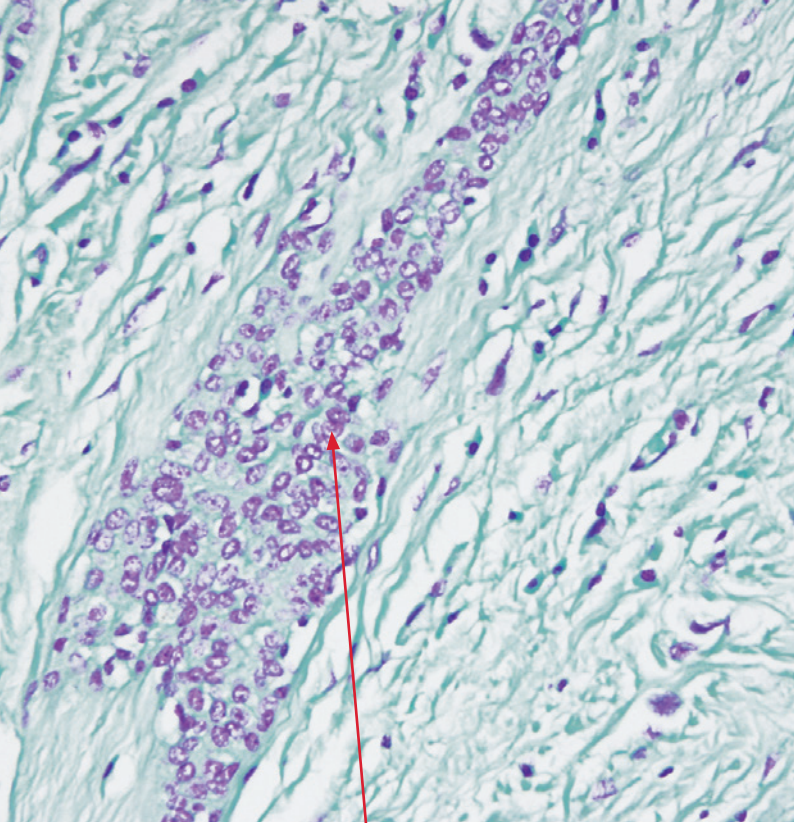
4 μ m

Control Tissue:

Cross section of artery, appendix and skin

Time per Slide*:

0:19:20

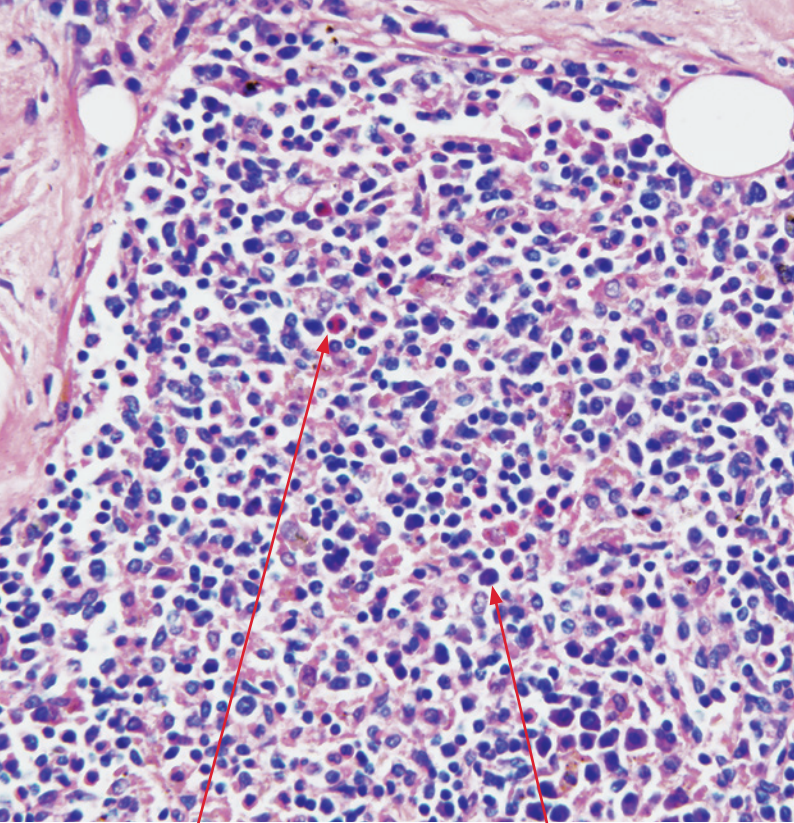


DNA:
Magenta

Feulgen

Intended for laboratory use to identify, by light microscopy and image analysis, deoxyribonucleic acid (DNA).

Product Code:	AR174
Staining Interpretation:	■ DNA: Magenta ■ Background: Light green
Cut Thickness:	4 μ m
Control Tissue:	Aneuploidy breast tumor
Time per Slide*:	01:07:01



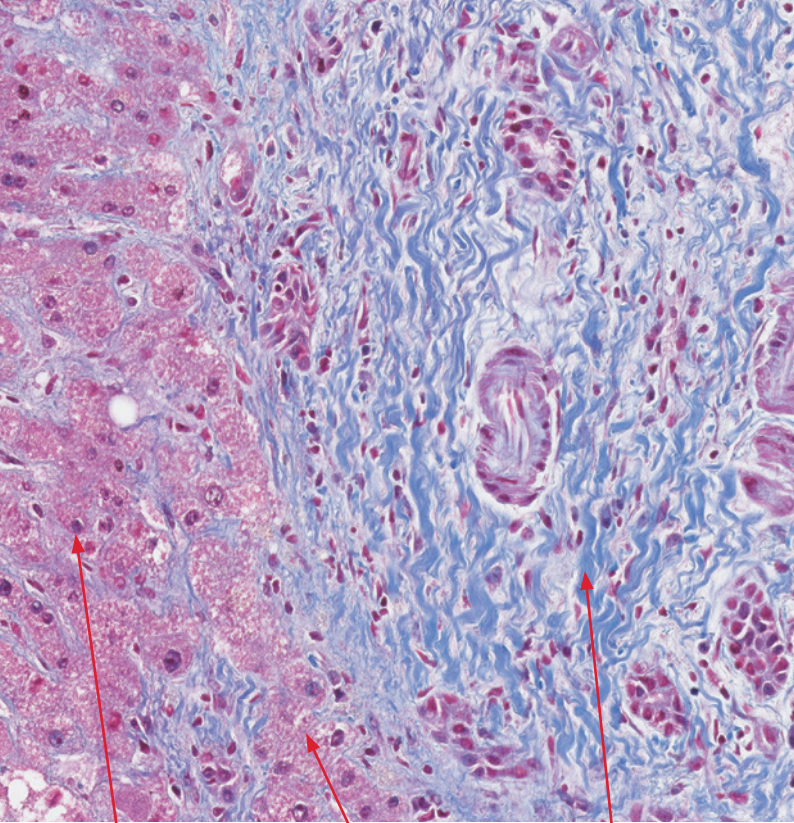
Eosinophils:
Bright pink

Lymphocytes:
Blue

Giemsa

Intended for laboratory use to differentiate, by light microscopy, hematopoietic cells (i.e. mast cells, basophiles, polymorphonuclear leukocytes etc), in tissue samples.

Product Code:	AR164
Staining Interpretation:	<ul style="list-style-type: none">■ Mast cell granules: Purple■ Basophils: Purple■ Eosinophils: Bright pink■ Lymphocytes: Blue
Cut Thickness:	4 µm
Control Tissue:	Tissue containing mast cells
Time per Slide*:	01:01:48



Nuclei:
Blue or Black

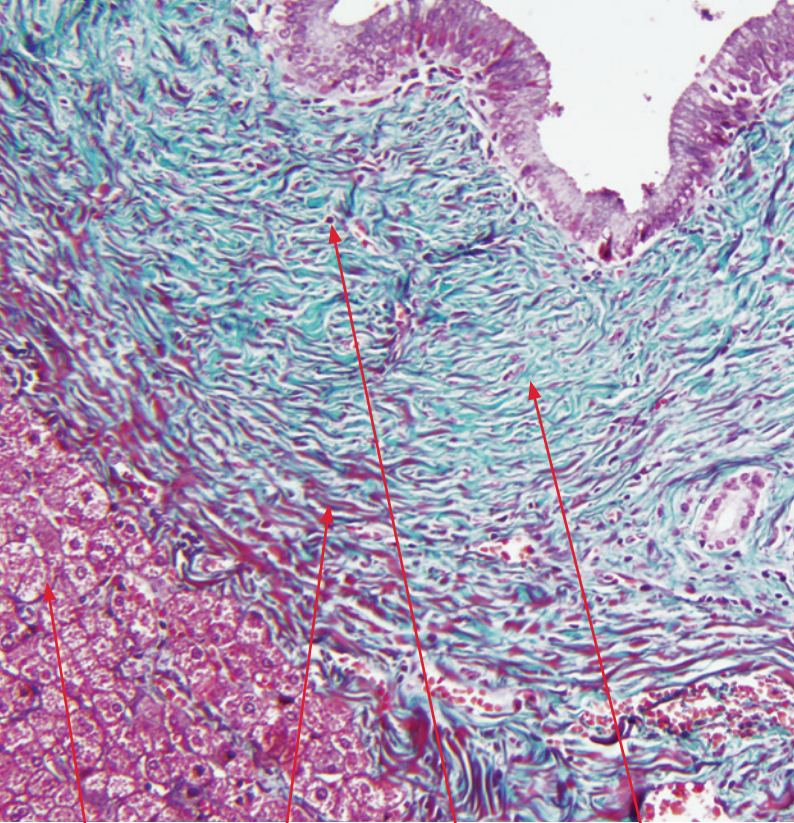
Cytoplasm:
Red

Collagen:
Blue

Gomori's Blue Trichrome

Intended for laboratory use to identify, by light microscopy, connective tissue in tissue samples.

Product Code:	AR167
Staining Interpretation:	<ul style="list-style-type: none">■ Cytoplasm: Red■ Fibrin: Pink■ Collagen: Blue■ Nuclei: Blue or black■ Erythrocytes: Red
Cut Thickness:	4 μ m
Control Tissue:	Uterus, kidney and liver
Time per Slide*:	0:45:02



Cytoplasm:
Red

Fibrin:
Pink

Nuclei:
Blue or Black

Collagen:
Green

Gomori's Green Trichrome

Intended for laboratory use to identify, by light microscopy, connective tissue in tissue samples.

Product Code:

AR166

Staining Interpretation:

- Cytoplasm: Red
- Fibrin: Pink
- Collagen: Green
- Nuclei: Blue or black
- Erythrocytes: Red

Cut Thickness:

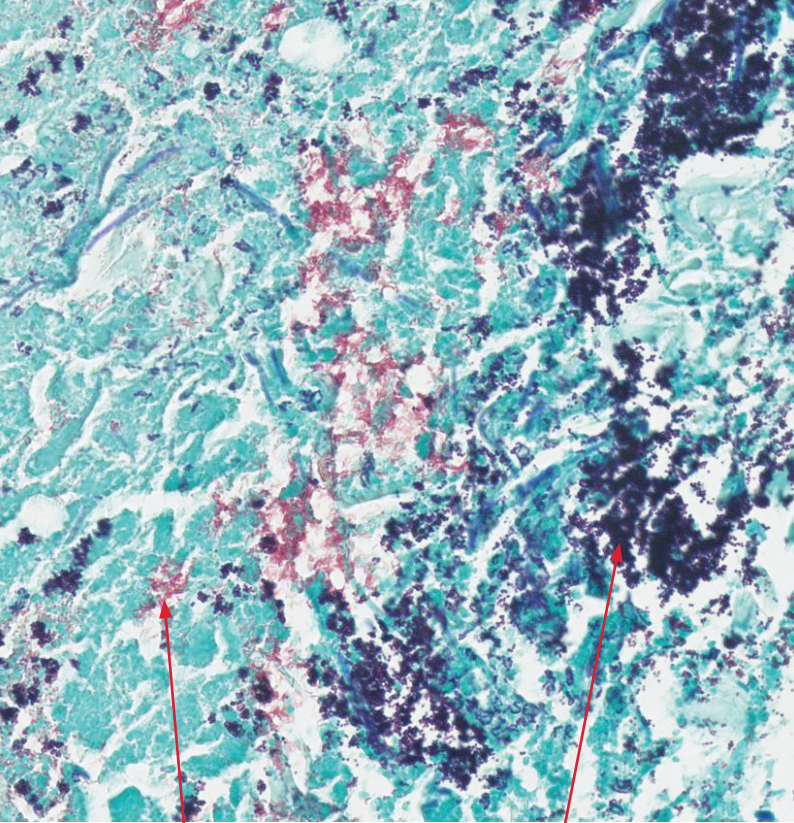
4 μ m

Control Tissue:

Uterus, small intestine, liver, appendix and fallopian tube.

Time per Slide*:

0:29:13



Gram-negative Bacteria:

Red

Gram-positive Bacteria:

Blue

Gram

Intended for laboratory use to identify, by light microscopy, Gram-positive and Gram-negative microorganisms in tissue samples.

Product Code:

AR175

Staining Interpretation:

- Gram-positive organisms: Blue
- Gram-negative organisms: Red
- Background: Varying shades of blue/green

Cut Thickness:

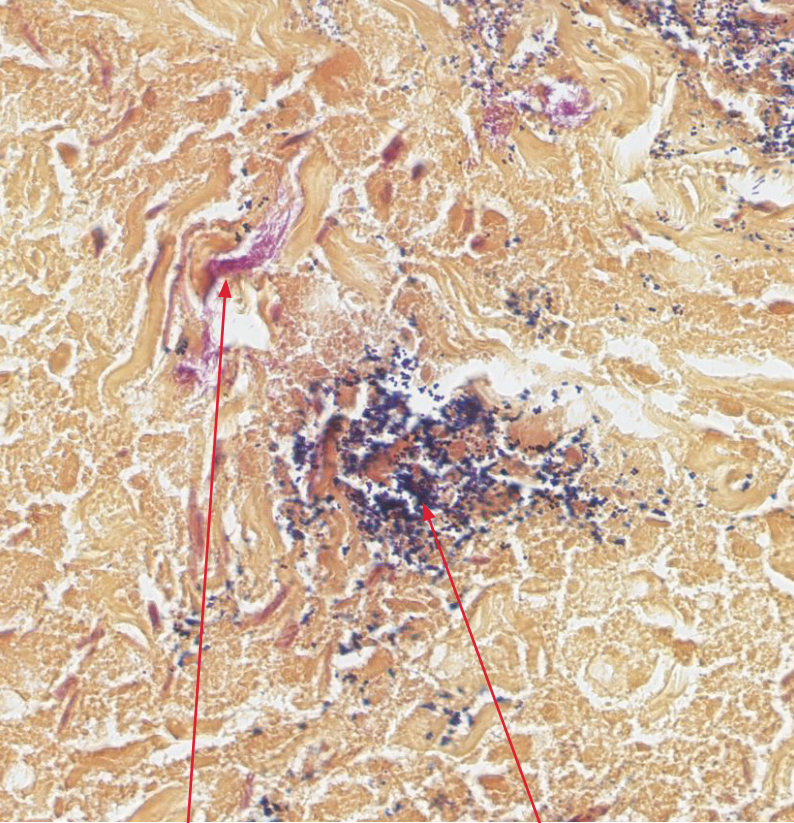
4 μ m

Control Tissue:

Tissue containing both Gram positive and Gram negative bacteria.

Time per Slide*:

0:24:00



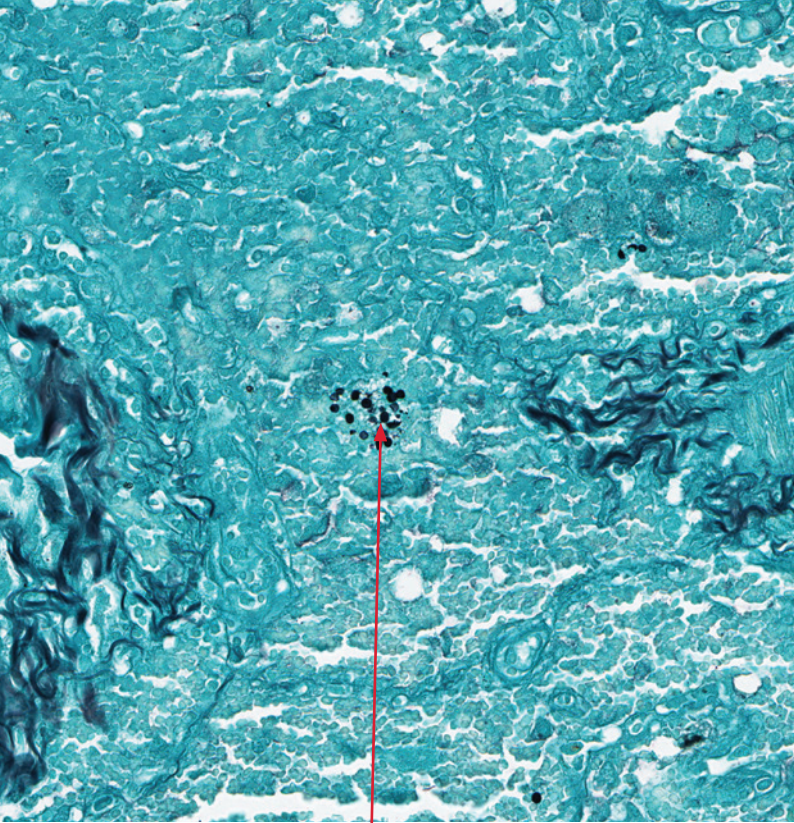
Gram-negative Organism:
Light pink to magenta

Gram-positive Organism:
Dark blue

Gram Yellow

Intended for laboratory use to identify, by light microscopy, Gram-positive and Gram-negative microorganisms in tissue samples.

Product Code:	AR306
Staining Interpretation:	<ul style="list-style-type: none">■ Gram-positive organisms: Dark Blue■ Gram-negative organisms: Light Pink to Magenta■ Background: Yellow
Cut Thickness:	4 μ m
Control Tissue:	Tissue containing both Gram-positive and Gram-negative bacteria.
Time per Slide*:	0:21:20



Pneumocystis Jirovecii:
Black

Grocott's Methenamine Silver (GMS)

Intended for laboratory use to identify, by light microscopy, fungal organisms and *Pneumocystis jirovecii* (formerly known as *carinii*) in tissue samples

Product Code: AR176

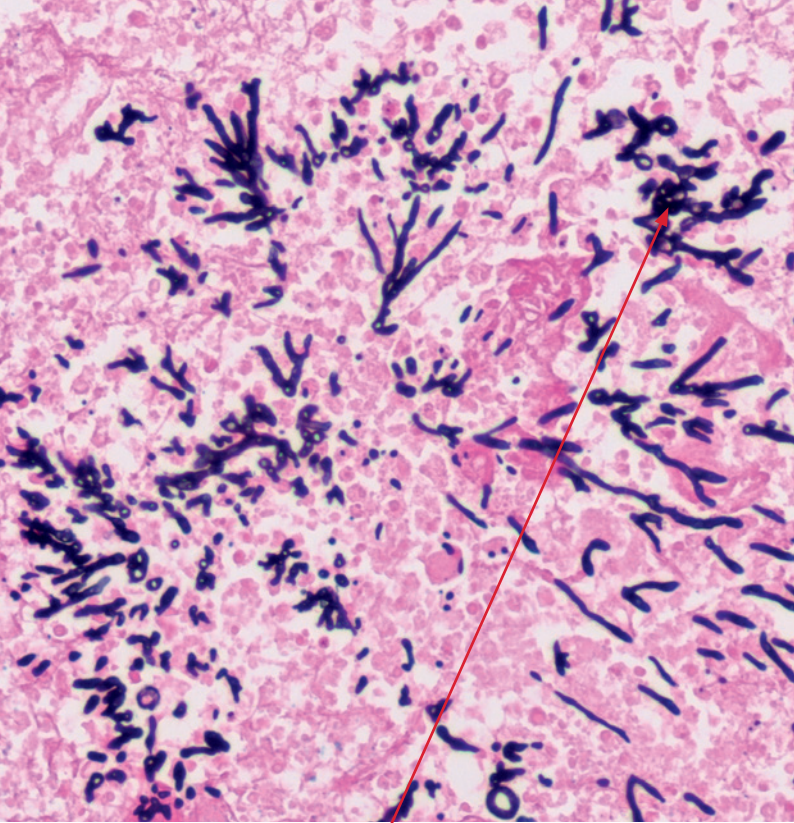
Staining Interpretation:

- Fungi: Black
- Pneumocystis: Black
- Background: Light green

Cut Thickness: 4 µm

Control Tissue: Tissue with *Aspergillus*, *Candida* or *Pneumocystis*

Time per Slide*: 0:50:19

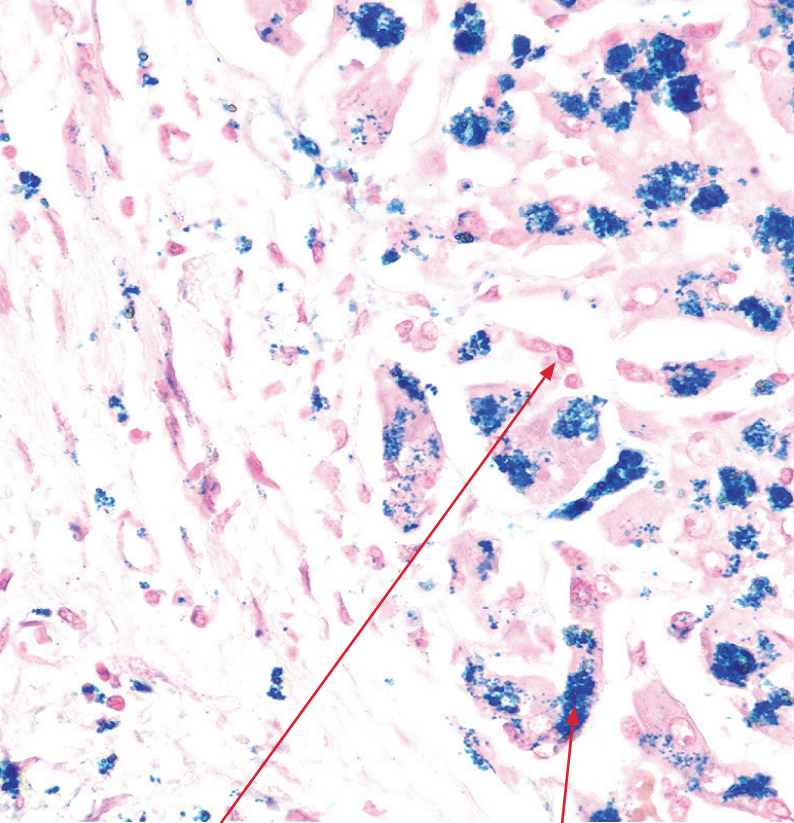


Fungi:
Black

Grocott's Methenamine Silver (GMS) Eosin

Intended for laboratory use to identify, by light microscopy, fungal organisms and *Pneumocystis jirovecii* (formerly known as *carinii*) in tissue samples.

Product Code:	AR376
Staining Interpretation:	■ Fungi: Black ■ <i>Pneumocystis</i> : Black ■ Background: Pink
Cut Thickness:	4 µm
Control Tissue:	Tissue with <i>Aspergillus</i> , <i>Candida</i> or <i>Pneumocystis</i>
Time per Slide*:	0:56:17



Nuclei:
Red

Ferric Iron:
Blue

Iron

Intended for laboratory use to identify, by light microscopy, ferric iron deposits in tissue samples.

Product Code:

AR158

Staining Interpretation:

- Ferric iron: Blue
- Nuclei: Red
- Background: Pink

Cut Thickness:

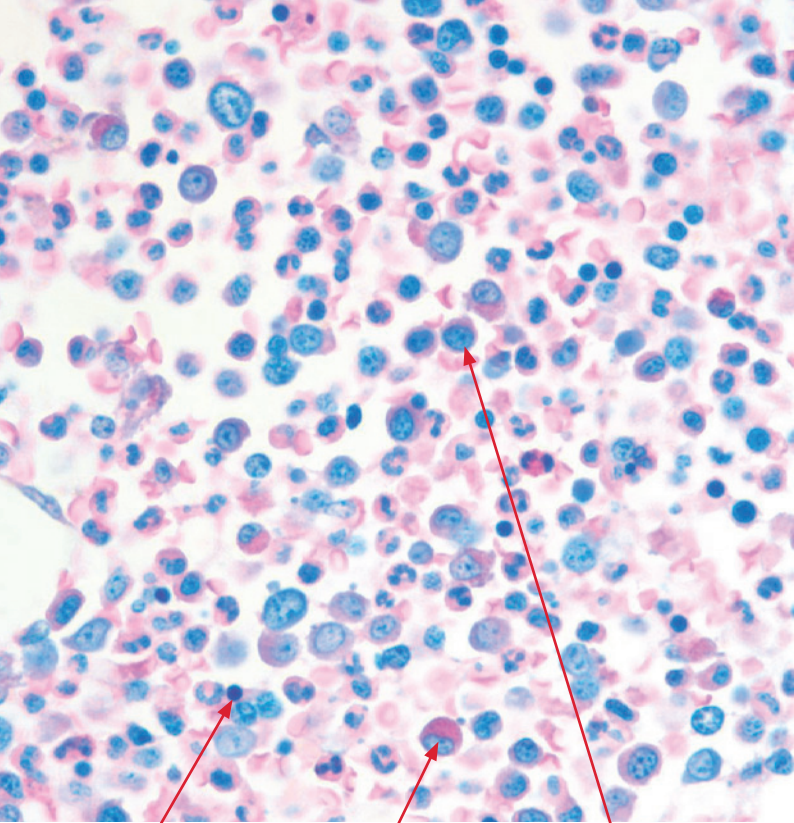
4 µm

Control Tissue:

Spleen or liver with hemosiderosis

Time per Slide*:

0:09:58



Nuclei:
Blue

Eosinophils:
Bright pink

Leukocytes:
Shades of pink, gray or
blue depending on cell
type and development

Jenner-Wright Giemsa

Intended for laboratory use to differentiate, by light microscopy, hematopoietic cells in bone marrow tissue samples.

Product Code:

AR308

Staining Interpretation:

- Nuclei: Blue
- Eosinophils: Bright Pink
- Leukocytes: Shades of pink, gray, or blue depending on cell type and development

Cut Thickness:

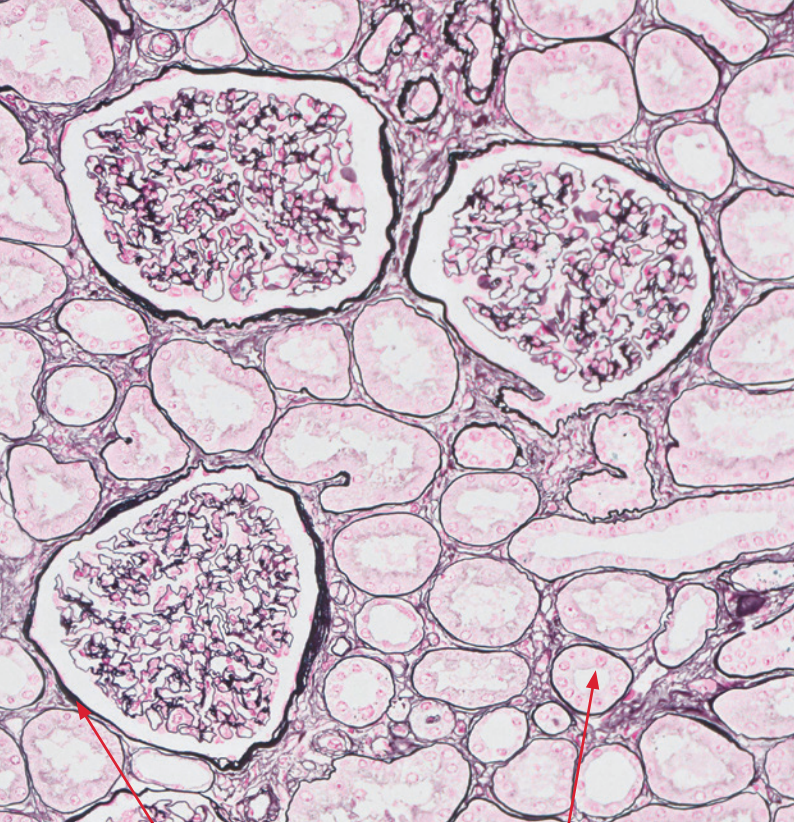
2-3 µm

Control Tissue:

Bone Marrow or spleen

Time per Slide*:

0:16:42



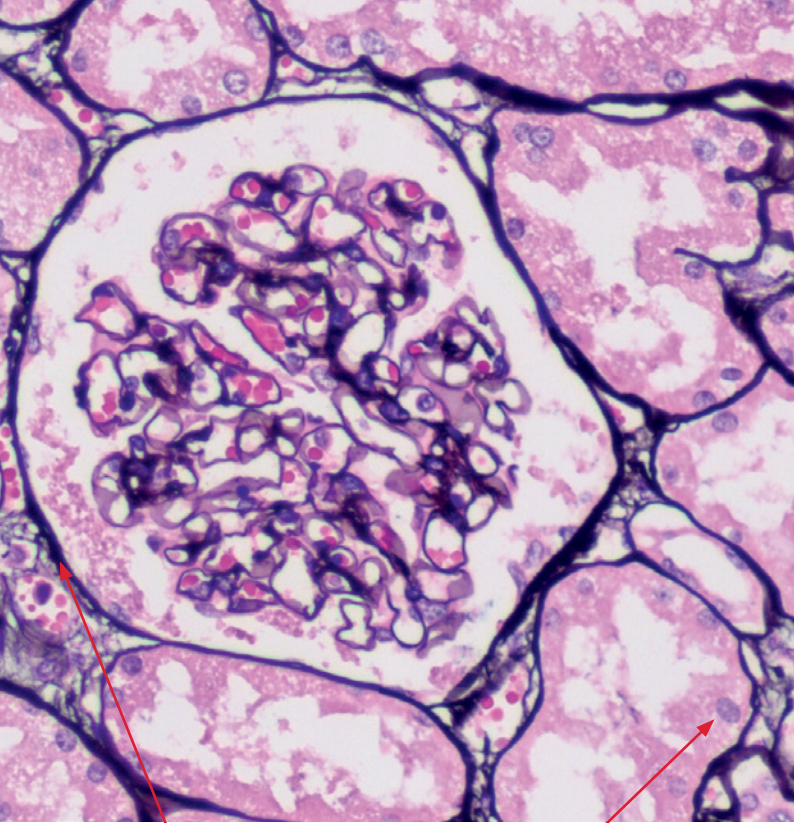
Basement Membrane:
Black

Nuclei:
Red

Jones' Basement Membrane (PAS-M)

Intended for laboratory use to identify, by light microscopy, basement membranes in tissue samples.

Product Code:	AR180
Staining Interpretation:	■ Basement membrane: Black ■ Nuclei: Red ■ Background: Pink
Cut Thickness:	2 μ m
Control Tissue:	Kidney with glomeri
Time per Slide*:	0:52:53



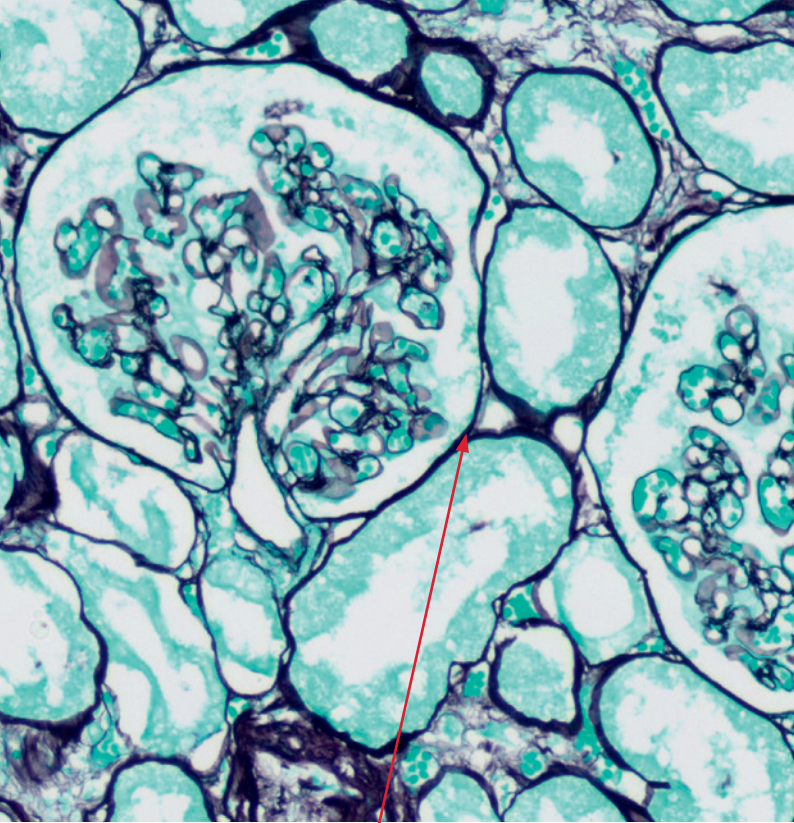
Basement Membrane:
Black

Nuclei:
Blue

Jones' Basement Membrane (PAS-M) H&E

Intended for laboratory use to identify, by light microscopy, basement membranes in tissue samples.

Product Code:	AR480
Staining Interpretation:	■ Basement membrane: Black ■ Nuclei: Blue ■ Background: Pink
Cut Thickness:	2 μ m
Control Tissue:	Kidney with glomeri
Time per Slide*:	0:45:21

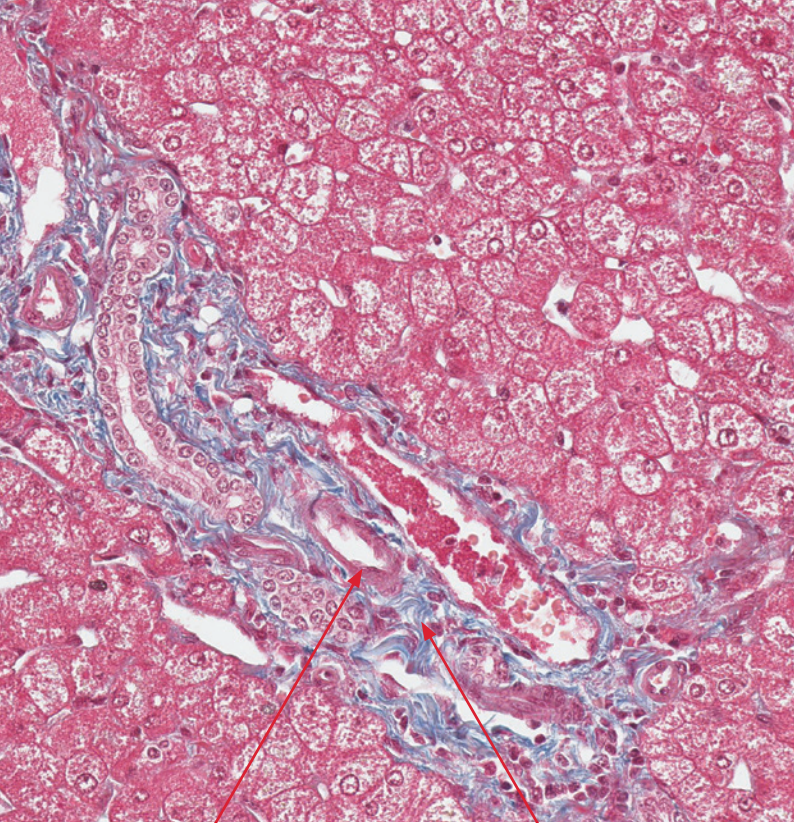


Basement Membrane:
Black

Jones' Basement Membrane (PAS-M) Light Green

Intended for laboratory use to identify, by light microscopy, basement membranes in tissue samples cut at 2 microns.

Product Code:	AR380
Staining Interpretation:	■ Basement membrane: Black ■ Background: Light green
Cut Thickness:	2 μ m
Control Tissue:	Kidney with glomeri
Time per Slide*:	0:42:55



Muscle:
Red

Collagen:
Blue

Masson's Trichrome

Intended for laboratory use to identify, by light microscopy, connective tissue and muscle in tissue samples.

Product Code:

AR173

Staining Interpretation:

- Muscle fibers: Red
- Fibrin: Pink
- Collagen: Blue
- Nuclei: Blue or black
- Erythrocytes: Red

Cut Thickness:

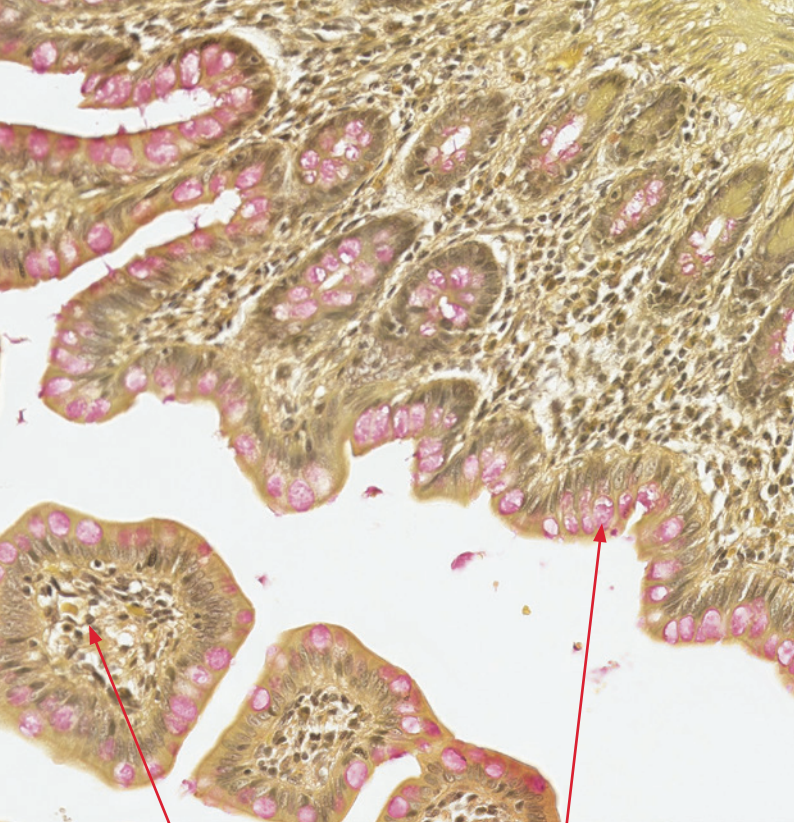
4 μ m

Control Tissue:

Uterus, small intestine, liver, appendix or fallopian tube

Time per Slide*:

0:57:15



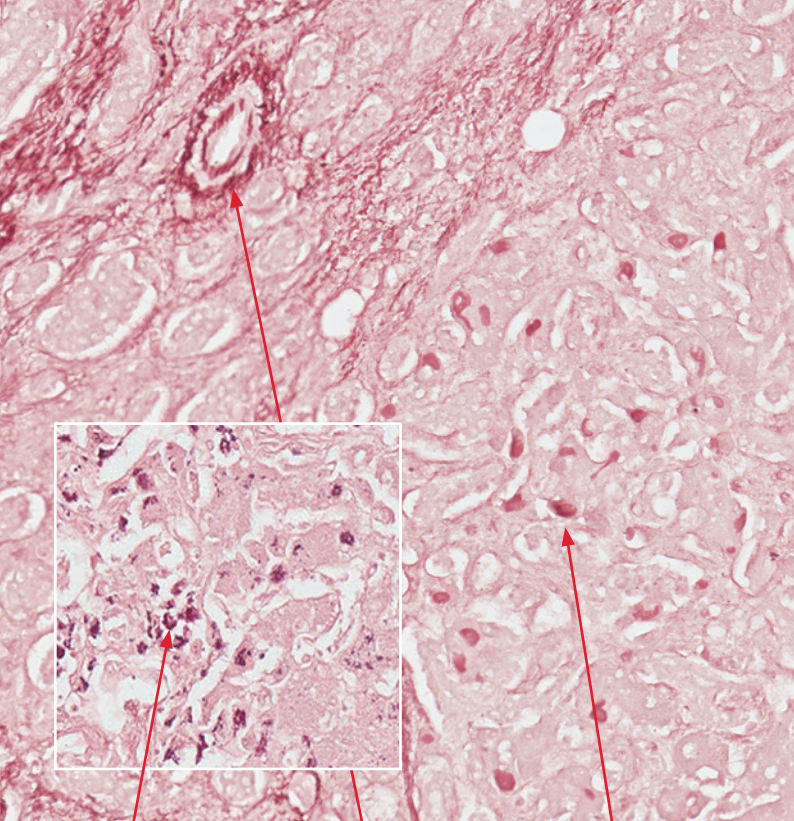
Nuclei:
Black

Mucin:
Pink

Mucicarmine

Intended for laboratory use to identify, by light microscopy, epithelial mucins in tissue samples.

Product Code:	AR168
Staining Interpretation:	<ul style="list-style-type: none">■ Mucin: Pink■ Nuclei: Black■ Background: Yellow
Cut Thickness:	4 μ m
Control Tissue:	Small intestine, colon or appendix
Time per Slide*:	0:50:54



Orcein

Intended for laboratory use to identify, by light microscopy, the viral inclusion bodies of Hepatitis B surface antigen(HBsAG) and Copper associated proteins in tissue samples.

Product Code:

AR313

Staining Interpretation:

- HBsAG/Elastin fibers: Dark reddish brown
- Copper associated protein: Dark red-purple
- Background: Pale pink – pink

Cut Thickness:

4 µm

Control Tissue:

Liver tissue containing positive HBsAG. Fetal liver can be used for Copper or liver with Wilson's disease. A multi-block containing positive liver for HBsAG and Copper with normal liver is recommended.

Time per Slide*:

0:15:44

Copper:

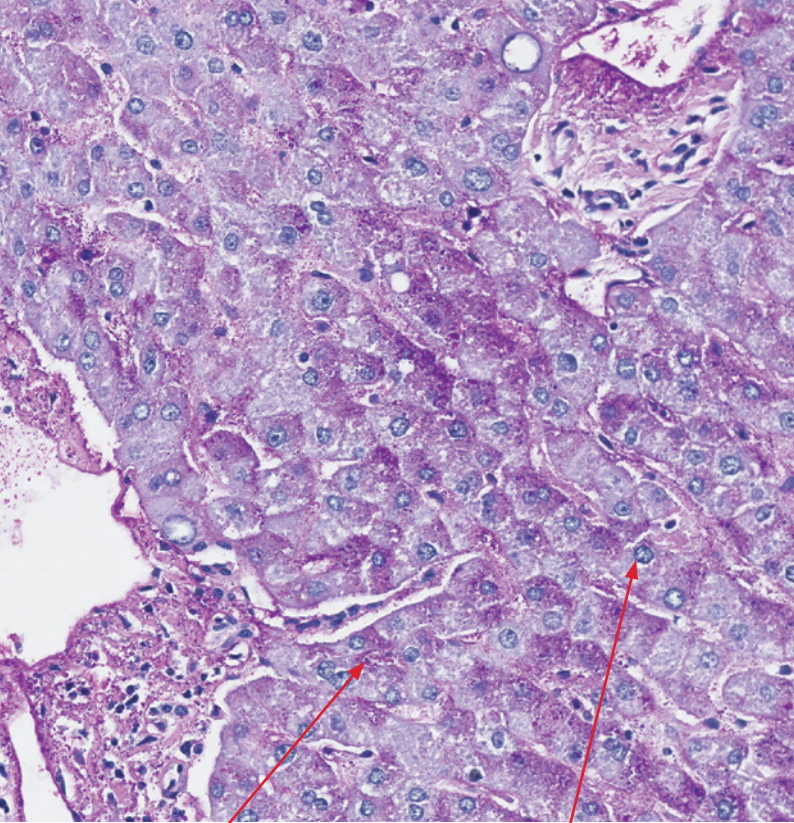
Dark red-purple

Elastin Fibers:

Dark reddish brown

HBsAG:

Dark reddish brown



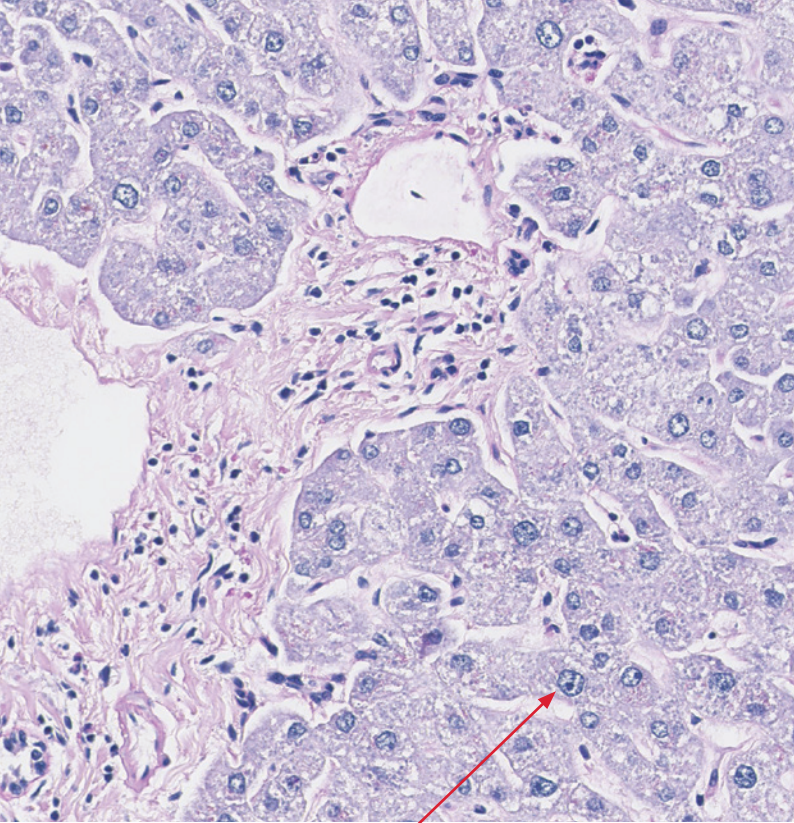
PAS-positive structures:
Magenta

Nuclei:
Blue

Periodic Acid-Schiff (PAS)

Intended for laboratory use to identify, by light microscopy, glycogen and mucopolysaccharide components in tissue samples.

Product Code:	AR165
Staining Interpretation:	<ul style="list-style-type: none">■ PAS-positive structures: Magenta■ Nuclei: Blue■ Background: Pink
Cut Thickness:	4 μm
Control Tissue:	<ul style="list-style-type: none">■ Kidney for basement membrane■ Liver with glycogen
Time per Slide*:	0:59:59

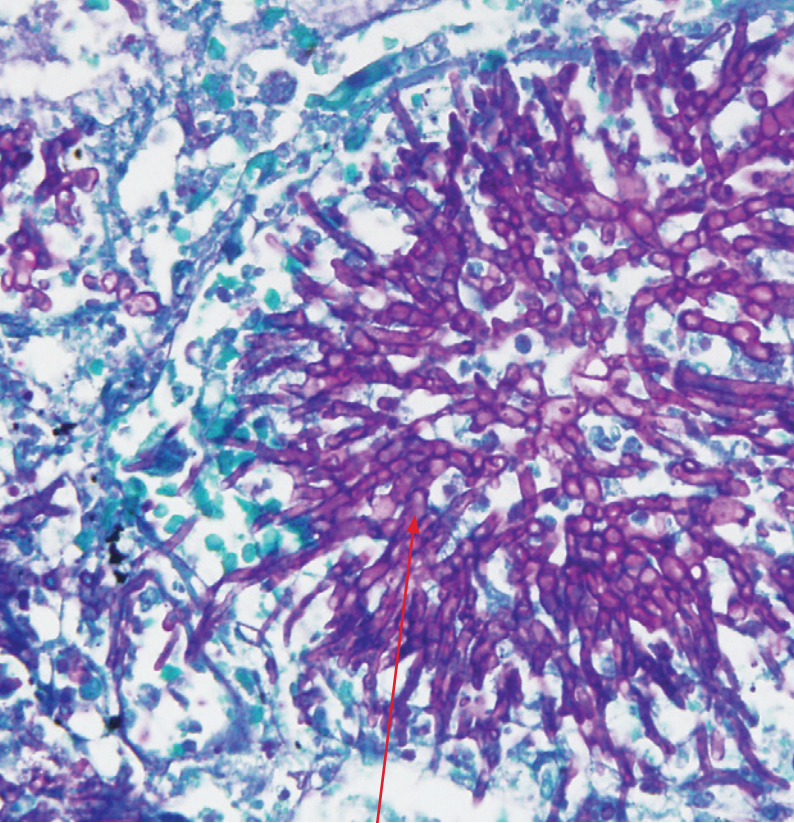


Nuclei:
Blue

Periodic Acid-Schiff (PAS) with Alpha-Amylase

Intended for laboratory use to identify, by light microscopy, glycogen and mucopolysaccharide components in tissue samples. Alpha-Amylase digestion removes any glycogen in the tissue.

Product Code:	AR165 (with AR171)
Staining Interpretation:	■ Nuclei: Blue ■ Background: Pink
Cut Thickness:	4 μ m
Control Tissue:	Liver containing glycogen
Time per Slide*:	01:14:02

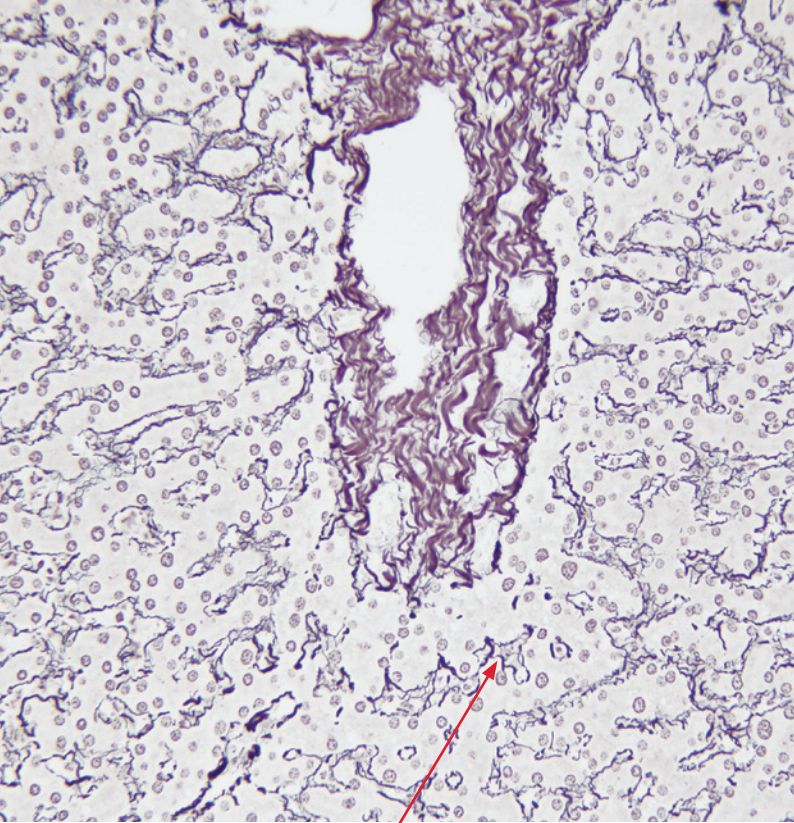


Fungi:
Magenta

Periodic Acid-Schiff (PAS) Green

Intended for laboratory use to identify, by light microscopy, fungi in tissue samples.

Product Code:	AR172
Staining Interpretation:	■ Fungi: Magenta ■ Background: Blue - green
Cut Thickness:	4 μ m
Control Tissue:	Skin tissue with <i>Candida albicans</i>
Time per Slide*:	0:24:12

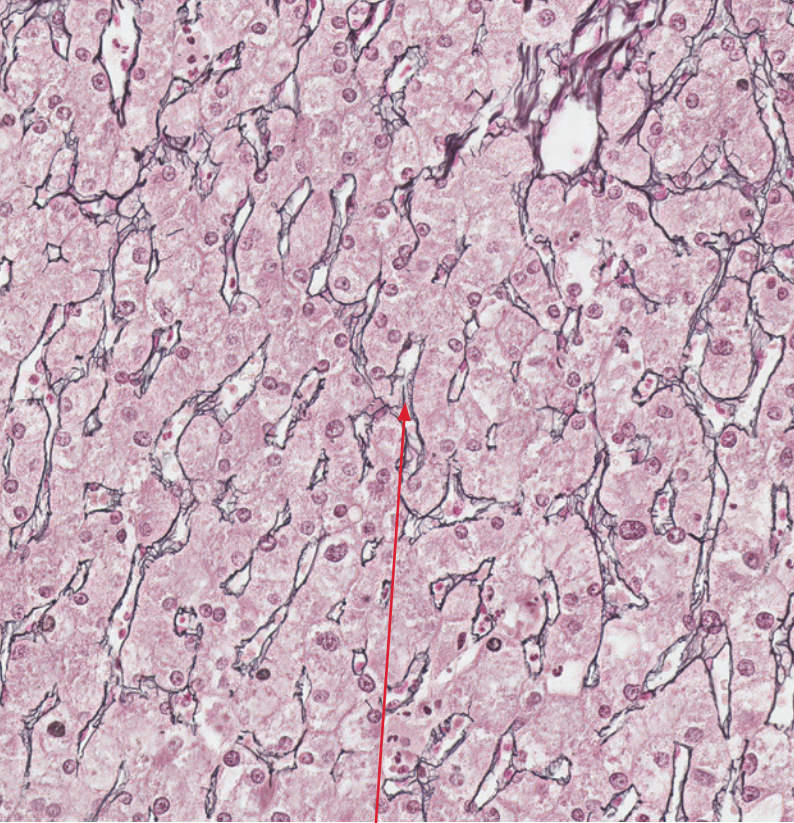


Reticulin Fibers:
Black

Reticulin/No Counterstain

Intended for laboratory use to identify, by light microscopy, reticulin fibers in tissue samples.

Product Code:	AR182
Staining Interpretation:	■ Reticulin fibers: Black
Cut Thickness:	4 μ m
Control Tissue:	Liver, spleen and lymph node
Time per Slide*:	00:38:57

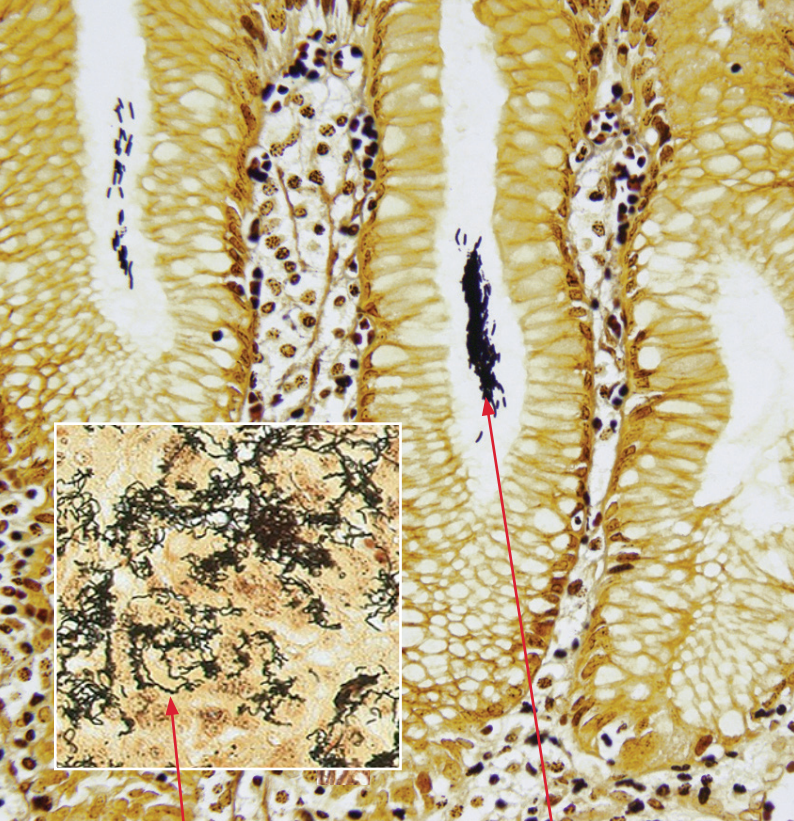


Reticulin Fibers:
Black

Reticulin/Nuclear Fast Red

Intended for laboratory use to identify, by light microscopy, reticulin fibers in tissue samples.

Product Code:	AR179
Staining Interpretation:	■ Reticulin fibers: Black ■ Background: Red
Cut Thickness:	4 μ m
Control Tissue:	Liver, spleen or lymph node
Time per Slide*:	01:02:59



Spirochetes:
Black

Helicobacter Pylori:
Black

Warthin-Starry

Intended for laboratory use to identify, by light microscopy, *Helicobacter pylori* and spirochete microorganisms in tissue samples.

Product Code: AR181

Staining Interpretation:

- *Helicobacter pylori*: Black
- Spirochetes: Black
- Background: Golden yellow

Cut Thickness: 4 µm

Control Tissue: Tissue with helicobacter and spirochetes

Time per Slide*: 00:07:38

Experience true automation with Artisan™ Link Pro.



Consistent

Get truly exceptional staining consistency from a reliable, proven and fully automated instrument.

- High quality reagents
- Standardized and validated protocols
- Reagents dispensed with precision
- Proven technology with minimal maintenance
- Full automation with onboard drying and clearing, and individual slide heating

Safe

Improve operator and environmental safety, compared to manual staining.

- Closed staining system and closed ready-to-use reagent cartridges
- Staining chamber ventilation (optional)
- Unique patented waste separation into four separate disposal streams
- Deparaffinization with non-hazardous Artisan™ Clearing Solution
- Reporting capabilities for accreditation and quality assurance

Easy to use

Make special stains simple with an extensive menu of automated stains, advanced editing of protocols and an optimized workflow.

- 31 high quality automated special stains, the largest menu available
- 48 slide capacity enables overnight runs, the highest within special stains
- Run up to 14 different stains simultaneously
- Flexible protocols, editable according to the preferences of your lab
- Intuitive operation with DakoLink™ software integration with LIS and LAN connectivity

For additional information on Artisan™ Link Pro or other Dako solutions, contact your local Dako representative or visit www.dako.com.



An **Agilent Technologies** Company

Corporate Headquarters Denmark
+45 44 85 95 00

Australia
+61 2 9922 0700

Austria
+43 1 408 43 34 0

Belgium
+32 (0) 16 38 72 20

Brazil
+55 11 50708300

Canada
+1 905 335 3256

China
+86 21 3612 7091

Denmark
+45 44 85 97 56

Finland
+358 9 348 73 950

France
+33 1 64 53 61 44

Germany
+49 40 69 69 470

Ireland
+353 1 479 0568

Italy
+39 02 58 078 1

www.dako.com

Represented in more than 100 countries

Japan
+81 3 5802 7211

Korea
+82 2 402 6775

The Netherlands
+31 20 42 11 100

Norway
+47 23 14 05 40

Poland
+48 58 661 1879

Spain
+34 93 499 05 06

Sweden
+46 8 556 20 600

Switzerland
+41 41 760 11 66

United Kingdom
+44 (0)1 353 66 99 11

United States of America
+1 805 566 6655

29030 04JUN14